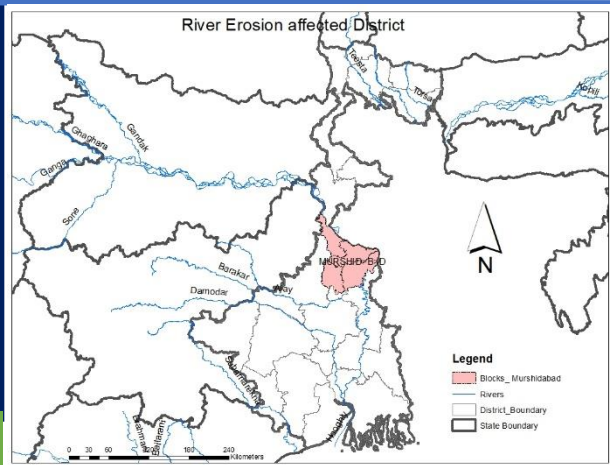


# SITUATION REPORT- 1

## Riverbank Erosion in Murshidabad, West Bengal

Date: 09<sup>th</sup> Oct. 2024 (Wed)  
Time: 2:00 PM (IST)



### SITUATION UPDATE

- Riverbank erosion along the Ganga has been a [frequent affair](#) in West Bengal's Murshidabad district.
- The recent spate of erosion in Samsheganj started on September 23. On that day, three houses, a mosque and part of a graveyard were washed away at Loharpur village. Then 150 people had been evacuated. Two days later, two houses were eaten up by the river in nearby Pratapganj village. Another 100 people were evacuated on that day. On September 27 and [October 4](#), erosion occurred at Sikdarpur village. The erosion over two days swept away 12 houses and 600 people left the village in panic.
- The last major erosion occurred on night of October 6, at Uttar Chanda village and on Oct 7, around 1,200 people have moved out of the area after dismantling their homes. In all, more than 1,500 have become homeless in the last two weeks.
- The Disaster Refugees/internally displaced people (IDPs) are staying in government primary schools in Uttar Chachanda, and New Shivpur.
- The District Disaster Management Officer says, "In last one month i.e. September 2024, 60-Houses have been fully submerged/damaged, affecting 300-people in Samsheganj block, while, 25 no. of Houses have been submerged in river in Lalgola block affecting 100 people".
- A year wise break of impacts, reports that in 2021-22, nearly 500 houses were fully eroded, while in 2023, around 250 houses were damaged.
- According to the 2020-21 [Murshidabad District Disaster Management Plan](#), more than 65,000 households in villages of Samsheganj block have been identified as vulnerable to flood, waterlogging and erosion.

### GOVERNMENT RESPONSES

- The District and Block Administration is providing relief materials viz. Tarpaulins, Dry Food, Rice, Lentils, vegetables to Disaster/Climate Refugees, internally displaced people.
- The Irrigation Depatt. is surveying to assess areas with breached embankments to repair those breaches.
- This year, the state government has allocated 100 crore to carry out erosion prevention work. As stop gap, the administration is using sandbags and bamboo to strengthen the banks.
- The District Administration has been allotting land to a few displaced families. However, the high population density in the region and limited land availability are significant constraints, making it difficult to accommodate all the affected families.

### Statistical Analysis

- Affected District: **01** (Murshidabad)
- Affected Blocks: **02** (Samsheganj, Lalgola)
- Affected Villages: **13** (Dhangarah, Dhusripara, Natun Shibpur, Kamalpur, Hiranandapur, Chachanda, Uttar Chachanda, Sikdarpur, Loharpur, Pratapgarh, & 16, 17, 18 no. wards of Dhuliyani Municipality)
- Affected People: **900** (In last one month; 700 in Samsheganj, 200 in Lalgola)
- No. of Houses Damaged: **85** (60 Houses in Samsheganj, 25 Houses in Lalgola)

**IMMEDIATE NEEDS:** Shelter: Tarpaulin; Food & Nutrition: Dry Food, Rice, Lentils, vegetables, Oil; Kits: Dignity Kits, Fuel and Cooking, Utensils, Bucket, Mugs; Cash Assistance (source: DDMO, Murshidabad)



[Watch Videos here>>](#)  
(Source: x.com/ians\_india)



# HUMANITARIAN RESPONSES

- A field visit was conducted by PRISM and Science Connect to Dhuliyani, a municipality town in the Samserganj block, particularly during the summer and monsoon seasons, to observe the situation, and carry out a study to learn about the causes of river erosion and concerns of affected population. [Draft Report >>](#)
- An academy webinar, as well as humanitarian support mobilization is being planned from October 11 onwards.
- The District IAG is monitoring the situation and coordinating with State IAG and Sphere India.

# VISUALS OF IMPACTS



**10 homes sink, many flee**

► **PROBABILITY** While 10 houses were lost to the Ganga, 200 families living near the riverbank panicked and removed their goods at night. Here that they would be the next victims, these people demolished their houses to leave the area with things like bricks, windows and doors. **Schin Maitty, 55,** who has his house spent Sunday night in the Ganga and was in the middle of the village. **Schin said:** "I had a house a couple of years ago and I sold my ancestral house a couple of years ago and bought land here to live in. I got it through a politician. The last major erosion occurred on Saturday night at Uttar Chandi village and on Monday around 1,200 people were moved out of the area after demolishing their houses. It's more than 1,000 houses in the last two weeks. This year, the state government has allocated the crore amount to carry out erosion prevention work. As per plan, the administration is using sand bags and bamboo to strengthen the banks. But villagers and such efforts should have been washed away. After erosion struck, 100 houses were lost in the village on September 23 and 100 houses were used as temporary shelters and it worked. This should have been done much earlier," said a village. Erosion is threatening the state's south to the north, and the Anandpur Sahib railway line. After the erosion at Chandi, the river is only 500 meters from the railway tracks and 100 meters from the national highway. **Schin said:** "I don't know how many people have been washed away. At least 100 houses have been demolished out of four while the rest of the area has turned into shacks. The government has started working, but it's not working."

08-10-2024  
<https://epaper.telegraphindia.com/> The Telegraph

### Key Contacts:



Jayanta Choudhury, District IAG, Murshidabad, W.B: 97751 82055  
[amichowdhury2015@gmail.com](mailto:amichowdhury2015@gmail.com); Altamash Khan, Manager - IAC,  
Sphere India – 97180 73951, DDMO MBD, Mr. Kamal: 75849 11534



### Source of Information:

DDMA-Murshidabad, BDO-Samsherganj,  
Media, Social Media, Sphere India  
network, District IAG

### Disclaimer:

Sphere India makes every effort to verify the information contained in its Situation Reports. As the ground situation changes rapidly in emergency situations, users should check with concerned agencies before making any decisions based on the information provided in this report.

Supported By:

