

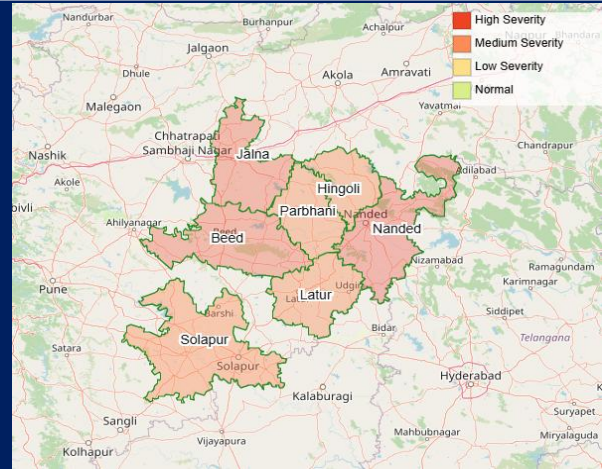


Situation Report 02

Maharashtra Floods

Date: 30th September 2025

Time: 11:00 AM



SITUATION UPDATE

- The Marathwada region of Maharashtra is experiencing severe flooding following unprecedented rainfall that began on 20 September 2025 and intensified between 26 and 29 September, with some areas recording nearly 200 mm of rainfall within 24 hours.
- This extreme weather event has transformed the historically drought-prone region into a flood-affected zone, impacting over 3,000 villages across nine districts, including Chhatrapati Sambhajnagar, Jalna, Nanded, Beed, Parbhani, Dharashiv, Hingoli, Latur, and Solapur.
- The situation has been further aggravated by the Jayakwadi dam on the Godavari River reaching near-full capacity, necessitating massive water releases of up to 3 lakh cusecs, which significantly worsened downstream flooding conditions.
- More than 11,800 people have been rescued and evacuated from affected areas, with approximately 1,020 people sheltered in Nanded city and around 7,000 in relief camps in Chhatrapati Sambhajnagar.
- Since 1 June 2025, 104 monsoon-related deaths have been reported in the region, including nine fatalities directly linked to flooding since 26 September, while one person remains missing from Garada village in Kannad taluka.
- A total of 36.9 lakh farmers have been affected by the ongoing monsoon, with recent floods adding further distress to farming communities already grappling with vulnerability from recurrent drought.
- Agriculture has suffered widespread devastation, with nearly 32 lakh hectares of farmland impacted since June and about 4.5 lakh hectares inundated during the latest floods, including 1 lakh hectares in Solapur and Dharashiv districts alone.
- Livestock losses have reached 2,838 animals since June, including recent deaths of 40 buffaloes and 15 cows in Nanded, while in Dharashiv district, heavy rainfall between 26 and 28 September killed 81 animals.
- Housing and infrastructure damage has been extensive, with Dharashiv district alone reporting 541 houses destroyed, and Chhatrapati Sambhajnagar recording at least 15 houses damaged.

Statistical Overview



Districts Affected:
09



Population Affected:
37 lakh



Casualties:
09 (104 from June 01st)



Agricultural Impact:
32 lakh hect



People evacuated:
11, 800



Livestock Affected:
2838



Villages Affected:
3000



Displaced Population:
Approx. 8000



Roads Damaged:
2701 KM



Electricity poles affected:
9567



Schools Damaged:
1064



Healthcare Centre Affected:
352



Houses Damaged:
541 (Dharasiva)



- The estimated financial cost of damage across the region has risen to ₹2,432.53 crore, covering 2,701 kilometers of roads, 1,504 bridges, and 9,567 electricity poles requiring restoration.
- The education and health sectors have also been severely affected. A total of 1,064 schools have been partially or fully damaged, disrupting academic activities for thousands of students, including six schools destroyed in Dharashiv district.
- Healthcare services have been compromised, with 352 primary health centres impacted, limiting medical service delivery across rural areas.
- In Chhatrapati Sambhajnagar, official reports confirm that 17 villages across three talukas have been affected, with extensive waterlogging, damage to agricultural fields, and disruption of transport and essential services.

GOVERNMENT RESPONSE

- The Government of Maharashtra, in coordination with central agencies, has initiated comprehensive emergency response operations to address the widespread flooding in the Marathwada region. Sixteen National Disaster Response Force (NDRF) teams have been deployed across the affected districts, working in close coordination with the Indian Army, State Disaster Management Authority, and district administrations.
- Relief camps have been established in schools and community halls, providing shelter to more than 11,800 evacuated persons. These facilities are systematically organized to ensure adequate food supplies, medical care, and essential relief items for the displaced population.
- The state government has activated compensation schemes for affected farmers and initiated infrastructure repair programs. Digital aid disbursement mechanisms are being prepared to ensure transparent and efficient delivery of financial support to beneficiaries. In line with this, the Maharashtra Cabinet has approved a relief package of ₹2,215 crore to support approximately 31 lakh farmers across the affected districts. A portion of these funds has already been released to district administrations, with instructions to credit amounts directly into farmers' bank accounts at the earliest.
- Recognizing the significant livestock losses and acute shortages of fodder in multiple districts, the Chief Minister has directed immediate supply of fodder and deployment of veterinary assistance as part of the relief measures.
- Additionally, the state has formally sought enhanced central assistance, including the release of funds from the National Disaster Response Fund (NDRF), to supplement allocations from the State Disaster Response Fund. A request has also been submitted to the Union Ministry of Home Affairs for further support to strengthen ongoing response and recovery operations.



Medical Relief in Rahegaon village (Nanded)



Relocation of families from Saigaon, Girna riverbank, to the local school.



Flood Rescue Operations in Parbhani District



HUMANITARIAN RESPONSE

- **SEEDS India** teams are actively on the ground in the flood-affected areas of Marathwada, delivering emergency aid to impacted families. Immediate support is being provided in the form of food supplies, hygiene kits, essential household utensils, and temporary shelter.
- **Humanitarian Aid International** is on the ground in Marathwada, responding to the urgent needs arising from the floods. They are seeking support to protect livestock and safeguard rural livelihoods, as thousands of farming families remain at risk of losing their primary sources of income.
- **DonateKart** is extending crucial support to flood-hit areas of Maharashtra by supplying essential relief materials through its partner organisations. As of the latest update, over 850 ration kits and more than 1650 shelter-cum-hygiene kits have been approved across multiple districts including Beed, Jalna, Osmanabad (Dharashiv), Parbhani, Hingoli, and Solapur. These supplies, channeled through partners such as CARD Jalna, Dilasa Sanstha, Sankalp Manav Vikas Sanstha, Gopalchand Bahuuddeshiya Sanstha, Humanitarian Aid International (HAI), and Jivhala Sanstha, are at various stages of distribution, transit, or delivery.
- **CYDA** is on the ground in South Solapur, responding to the devastating floods that have left thousands without food, clean water, and shelter. Their teams are providing urgent relief, but the needs remain overwhelming. They are seeking immediate support to bring food, safe drinking water, and essential supplies to affected families.
- **Pournima Mahila Bahuuddeshiya Sanstha, Andur** – Actively supporting flood-affected families in Dharashiv district by delivering essential relief supplies, particularly to villages cut off by heavy rains and facing acute food shortages.
- **Karvaan Foundation** – Responding to the massive floods in Marathwada by extending assistance to affected communities and appealing for wider solidarity to help families rebuild their lives.
- **Naam Foundation** – Mobilising volunteers for rescue and relief operations in flood-hit Marathwada and appealing for life-essential items to support communities in distress.
- **Bindas Zindagi Foundation** —reporting direct relief work on the ground (food/relief distribution, volunteer mobilisation) in Maharashtra flood-affected areas.
- **Sphere India** – Monitoring the situation at the state level and coordinating with responding agencies to ensure effective humanitarian action and collective support for impacted populations.



Donatekart is delivering ration kits in Jalna in collaboration with CARD



Flood affected areas in Solapur | Source: MahaPECONet WhatsApp Group

Source of Information

Local Organisation Maharashtra, Social Media, Sphere India
WhatsApp Group, LinkedIn, Twitter, MahaPECONet

Key Contacts:

- Mr. Vishnu P, Sphere India: +91 90487 79909;
vishnup@sphereindia.org.in

Disclaimer:

Sphere India makes every effort to verify the information contained in its Situation Reports. As the ground situation changes rapidly in emergency situations, users should check with concerned agencies before making any decisions based on the information provided in this report.

Supported By:

