

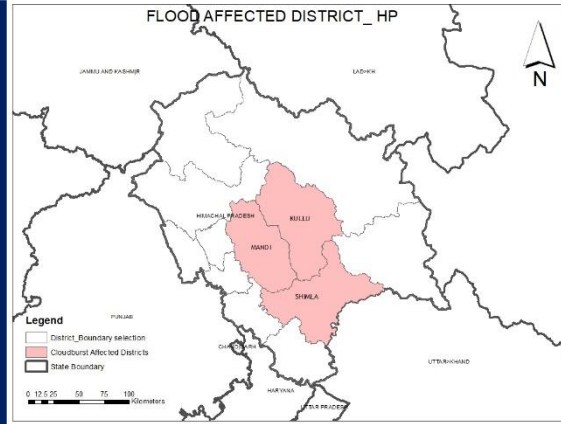


SITUATION REPORT- 3

Himachal Pradesh Cloudburst & Flash Floods

Date: 08th August 2024 (Thu)

Time: 11:00 AM (IST)



SITUATION UPDATE AND RESPONSE

Overview of Cloudburst and Landslide Incidents:

Himachal Pradesh has been severely impacted by continuous and heavy rainfall, resulting in multiple cloudbursts and landslides across various districts, including Shimla, Kullu, and Mandi. These incidents have led to significant loss of life, displacement of communities, and extensive damage to infrastructure.

Impact and Damage Assessment:

- As of the latest reports, a total of 14 individuals have tragically lost their lives due to the severe weather conditions. Additionally, around 45 persons remain unaccounted for, and search operations are ongoing to locate these missing individuals. A total of 55 people have been successfully evacuated from the affected areas to safer locations.
- The widespread devastation has resulted in the destruction or severe damage of 95 residential houses, 14 bridges, 10 shops, 4 schools, 19 cattle sheds, and 16 vehicles. The Kullu-Manali Highway, a critical route in the region, was partially washed away during the cloudburst, severely disrupting transportation. Restoration efforts are currently underway to repair the highway and other damaged infrastructure.
- In addition, a total of 85 roads, including 2 national highways, have been rendered impassable due to landslides and flooding, further complicating rescue and relief operations.
- The natural disaster has also impacted essential services, with 116 electricity transformers and 65 water supply schemes being affected. Efforts are being made to restore these services as quickly as possible to ensure that affected communities receive the necessary support.
- Preliminary assessments indicate that the state has suffered economic losses amounting to approximately Rs 748 crore due to the destruction caused by the ongoing monsoon.

CLOUDBURST IN SHIMLA DISTRICT (RAMPUR TEHSIL):

- On August 1, 2024, at approximately 04:47 hours, a cloudburst occurred near the Hydro Power Project in Rampur Tehsil, Shimla district. This catastrophic event has led to 33 individuals being reported missing, while 10 others have been safely evacuated. The disaster has caused extensive damage, including the destruction of 30 houses, 3 bridges, 1 school, and 4 vehicles.
- The response to this incident has been swift, with 3 teams from NDRF, 1 team each from the Indo-Tibetan Border Police (ITBP), SDRF, and the Home Guard, being mobilized to the site. These teams are working in coordination with local authorities to carry out search and rescue operations.

Statistical Analysis



Worst Affected Districts:
Shimla, Mandi, Kullu



Number of Casualties:
14



Evacuated people :
55 +



Missing People: Around
45



Electric Transformers
Affected : 116



Houses Destroyed :
95



Water Supply Affected:
65



Cattle Shed Affected:
19



Rescue Team Dispatched in Shimla



Government Responses

- Additional resources, including 3 rescue dogs, 2 drones, and Recco radar, have been deployed to aid in locating individuals who may be trapped under the debris. Efforts are also being made to strengthen and construct footbridges to facilitate movement and access for both rescue teams and villagers.

CLOUDBURST IN MANDI DISTRICT (PADHAR TEHSIL):

- In the early hours of August 1, 2024, at approximately 02:28 hours, a cloudburst occurred near Village Tikkan Thalukot in Padhar Tehsil, Mandi district. This event has resulted in the unfortunate deaths of 9 individuals, with 1 person still missing and another successfully evacuated. The incident also caused the destruction of 4 houses and 1 cattle shed.

Government Response

- A team from the NDRF, equipped with necessary rescue tools, has been deployed to the site to conduct search and rescue operations. Local police and administrative officials are also involved in these efforts to ensure the safety and well-being of the affected residents.

CLOUDBURST IN KULLU DISTRICT (NIRMAND TEHSIL):

- Another significant cloudburst incident was reported on August 1, 2024, at 01:38 hours near Village Jaon in Nirmand Tehsil, Kullu district. The cloudburst led to a dramatic rise in the water level of the Kurpan canal, situated behind the Singhad Base Camp near the Shrikhand Mahadev Yatra route. This incident has resulted in the death of 1 individual, with 11 others reported missing and 44 people being evacuated to safety. The disaster has caused widespread damage, including the destruction of 61 houses, 18 cattle sheds, 11 bridges, 10 shops, 3 schools, and 12 vehicles.
- Additionally, a flash flood incident occurred on the same day at approximately 05:42 hours near Malana, sub-tehsil Jari in Kullu district. This flash flood has led to a flood-like situation in the Parvati River, with a bridge being washed away and nearby roads becoming completely blocked. Fortunately, no loss of life has been reported in this specific incident.

Government Response

- Rescue and relief operations in Kullu are being coordinated by multiple teams from the NDRF, with 4 teams currently engaged in search and rescue activities. As of now, these teams have successfully retrieved 10 bodies, evacuated 26 individuals, and rescued 11 people and 4 livestock. One NDRF team was de-inducted from Kullu on August 2, 2024, following the completion of its assigned tasks.

HUMANITARIAN RESPONSES



- District-IAG Shimla held a situation review meeting on 07th Aug (Wed) and expressed the need for mapping as well as Joint Needs Assessment.
- Red Cross is actively supporting the district administration in Mandi district, assisting with ongoing relief and rescue operations.
- Mountain Forum Himalayas (MFH) is conducting an initial needs assessment in Shimla district. They are also providing support for Search and Rescue operations in coordination with local authorities.
- DOERS has pre-positioned relief materials which are ready to be distributed to affected communities as required.
- Donatekart has supplied relief materials through its local partners to aid those impacted by the disaster.
- ADRA is coordinating with the SDMA, DDMA, and District-IAGs to provide necessary support for ongoing relief efforts.
- Bal Raksha Bharat is prepared to distribute shelter, hygiene, and food kits.
- Sphere India is closely monitoring the situation and is in continuous coordination with local agencies to ensure an effective and timely response to the disaster.

Immediate Needs:

- NFIs like Utensils
- Beddings, cooking kit
- Storage equipment
- Temporary shelter kits
- Hygiene kit
- Livestock needs
- PWDs needs



MFH Volunteers in field for SAR

 <p>Source of Information MHA, Media, Social Media, Sphere India WhatsApp Group</p>	 <p>Key Contacts: Mr. OP Bhati, Red Cross & IAG Convenor, 75800 66900 Altamash Khan, IAC, Sphere India; 9718073951; altamash@sphereindia.org.in</p>
---	--

Disclaimer:

Sphere India makes every effort to verify the information contained in its Situation Reports. As the ground situation changes rapidly in emergency situations, users should check with concerned agencies before making any decisions based on the information provided in this report.